



Cintel DI Case Study



Valkieser's Rapid DI Rollout

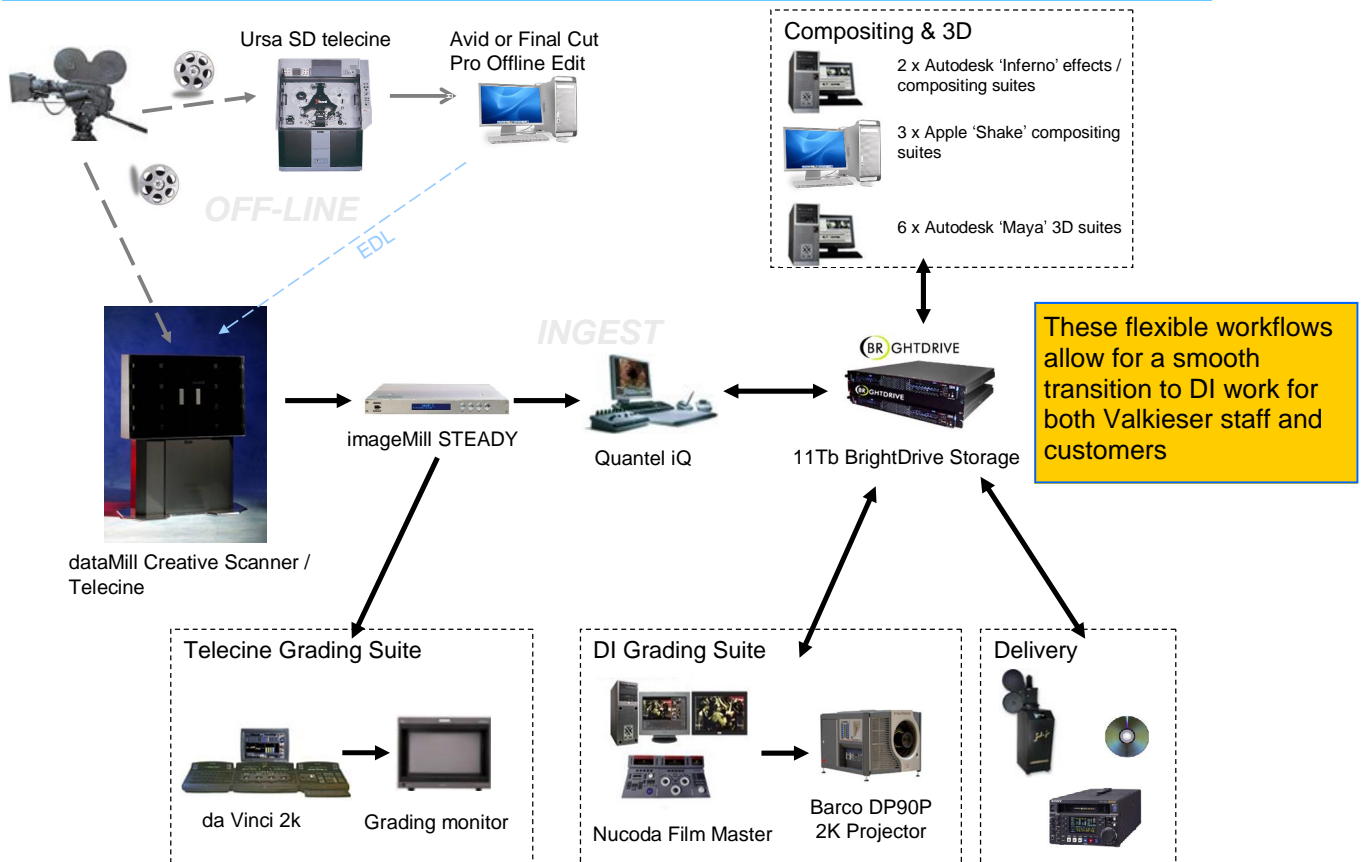
Valkieser Capital Images in Amsterdam have led the way over the last year in setting up a state of the art DI post production facility. By upgrading their Millennium telecine with the dataMill film scanning system they have been able to seamlessly roll out the DI workflow to their commercial and feature film clients. We talked to in-house producer Gerlof Kamerling about how their new flagship facility has been developed.

Profile

- Valkieser Capital Images has a heritage dating back to the 1980s, and set up its Amsterdam facility in 1995.
- In 2004, company founder Arthur Valkieser separated the business from its parent company UBF, allowing them to return to their roots focussing on high quality post production work.
- Since 2005 they have embarked on a major programme of investment in DI technology from companies including Cintel, Nucoda and Barco.
- They upgraded their existing Millennium telecine to a dataMill as part of the phased rollout of DI, and also acquired an imageMill running the STEADY application.



Flexible DI & Linear Workflows



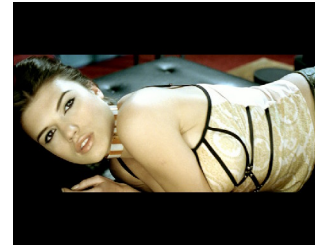
The Benefits for Valkieser

- The colourists at Valkieser love the pictures from the dataMill for the resolution, flexibility and “filmic look”.
- The stability achieved using STEADY has exceeded their expectations—“it’s amazing the way it can do it in real time without any visible artefacts” said Chief Engineer Antonie Colbers.
- By building on the existing linear telecine workflow, Valkieser can manage a smooth transition to DI without the need to invest in a dedicated scanner. Much of their original investment is retained for use as part of both DI and “traditional” workflows.
- Valkieser understand the importance of ensuring their equipment is producing the best possible results, and have worked in partnership with Cintel support engineers throughout the DI rollout.

“The support from Cintel has always been excellent”

Quality Feature Film & Commercial Results

“I love the pictures from the dataMill”
Gerlof Kamerling, Producer



The Business Case

- The 10-bit Log scanning capabilities of dataMill mean that film can be transferred onto the network quickly, without the need to tie up valuable colourist time.
- Using imageMill STEADY to provide highly stable images without the need for pin registration means that the dataMill is not tied up too long scanning feature films, keeping it available to handle more of the commercials jobs.
- The highly cost-effective nature of the dataMill upgrade meant that Valkieser’s DI investment could focus on building a comprehensively equipped showpiece DI suite, and rolling it out with clients with minimal disruption to their business.

Contacts

For further information, please contact:
Cintel International Ltd,
Watton Road, Ware,
Hertfordshire, SG12 0AE, UK

Tel: +44 (0)1920 463939
Email: sales@cintel.co.uk
Web: www.cintel.co.uk

Dealer stamp

--