



2K 4K

Film Scanning System

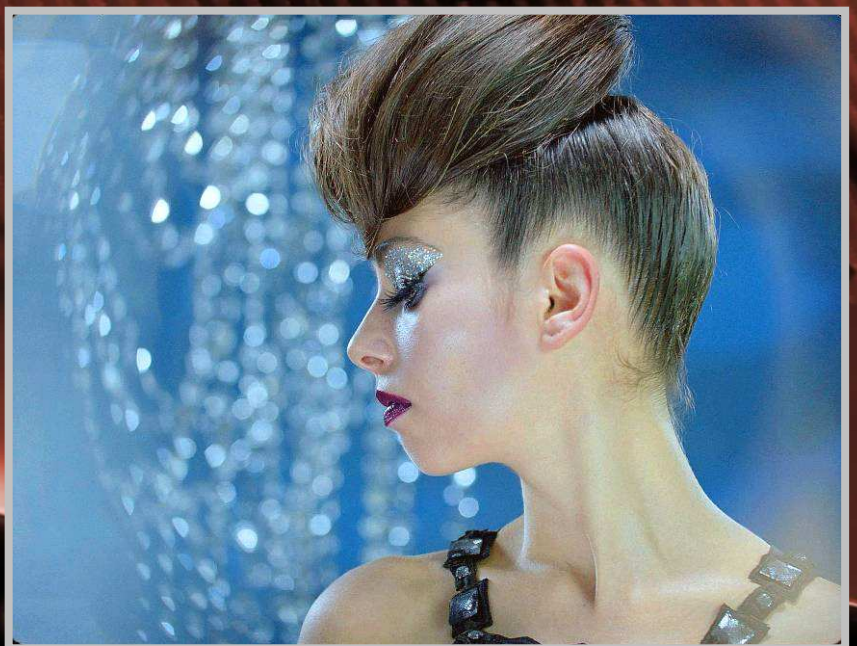
diTTO has evolved to provide 16mm and 35mm scanning for both Digital Intermediate and Archive applications



diTTO evolution

diTTO – the high resolution film scanner from Cintel – has evolved and grown. diTTO has become the solution to any film scanning application;

- Digital Intermediate Post Production
- Archive and Restoration



- RGB LED Light Source
- Low Noise Area Array CCD
- Auto calibrated DMIN transfers
- Density Range up to 3.2D – ideal for all film types
- Negative, Inter-negative, Inter-positive and Print film
- 16mm/S16mm
- 35mm/S35mm 2, 3 and 4 perf.
- Pin Registration mode for perfect stability
- Non-pin reg. mode for shrunken and damaged film
- D/SCO – Dust/Scratch Concealment Option
- Fast Shuttle (over 100fps)
- Incorporates Kodak Color Science
- Film Scanning System includes powerful, intuitive User Interface and built in RAID storage

16/S16mm
35/S35mm
2/3/4 perf.



Negative
Inter-positive
Inter-negative
Print

3.2D density range

2K and 4K
D/SCO Dust and Scratch Concealment*
GRACE Film Grain Management*
STEADY Image Stabilisation*



EDL Import and management,
Built-in RAID storage

Gig Ethernet
Fibre Channel etc.

Auto Calibrated DPX file with
embedded Keycode, Timecode
and 'Defect Map'*

Storage;
Colour
Correction;
Conforming;
Graphics/FX;
Restoration;
Output
deliverable.

diTTO evolution Film Scanning System

Dimensions

Width 1087mm Height 785mm (closed) 1352mm (open) (TBC)
Depth 820mm Weight 178kg

Power

Mains Supply 90v-265v 47/63Hz
Consumption 2kW Max. 1kW Nominal (TBC)

Transport System

Pin Registration and Non-pin registration modes
Over 2000ft per roll capacity
S35mm/35mm 4-perf Negative Film Gate*
S16mm/16mm Negative Film Gate*
35mm Positive Film Gate*
3-perf 35mm Negative Film Gate*
Over 100fps shuttle mode

Light Source

Ultra Stable RGB Light Emitting Diode (LED) Illumination
Diffusing Sphere for Dust and Scratch Reduction
Extremely low maintenance (approx. 100,000 hours life)

Scanning System

3K Area Array CCD Camera
4K Area Array CCD Camera*
Over-sampled 2K scanning at up to 7fps
Auto DMIN calibration
Kodak KMPS Factory Calibration
16/35mm Keycode reader*
D/SCO – Dust Scratch Concealment Option*
GRACE – Film Grain Management*
STEADY – Image Stabilisation*

Data Files and Format

10bit calibrated Cineon LOG (or LIN) DPX files
Simultaneous SD/HD file generation
Keycode* and Timecode embedded in DPX header
'Defect Map' embedded in DPX File*

Interfaces

Gigabit Ethernet Fibre Channel USB 2.0 / Firewire 800
Other PC interfaces available on request*

PC Based Control User Interface

Intuitive and powerful Windows-based interface
Full transport and scanning control
Data format and destination control
EDL import and clip management
'Real time' image viewer – Zoom and Pan Control
Waveform, Vectorscope and Histogram Monitoring
In-built local RAID array – scalable*
Kodak Display Manager (KDM) including calibration probe*

Kodak
Color Science

For more product information or for
an Agent near you, please contact:

sales@cintel.co.uk

Head office:
Cintel International
Watton House
Watton Road
Ware
Herts. SG12 0AE
UK
+44 (0) 1920 463939

USA office:
Cintel Inc.
28910 Ave. Penn, Suite 202
Valencia
California
USA
91355-4184
+1 (661) 294 2310



www.cintel.co.uk

*denotes option

dT-09-01