



imageMill 2

Cintel International Ltd.
Watton Road
WARE
Hertfordshire
SG12 0AE
England
Tel:+44 (0) 1920 463939
Fax:+44 (0) 1920 460803
Email: sales@cintel.co.uk



User Guide Issue 1.0

GRACE

While every effort has been made to ensure that the contents of this document are accurate, Cintel International equipment is under constant review to bring about improvements in design and a unit may differ in detail from that described.

© Cintel International Ltd 2009

The copyright of this document is the property of Cintel International Ltd. and the document contains proprietary information of Cintel International Ltd. It is supplied in confidence and must not be used for any purpose other than that for which it is supplied. No part of the document shall be reproduced, published or disclosed to a third party without the prior written consent of Cintel International Ltd

Contents

Introduction

General Description of imageMill 2.....	3
General Description of imageMill 2 applications.....	3
Safety Warnings and Information.....	3

Installation and Configuration

imageMill 2 connections to equipment.....	6
imageMill 2 Rear Panel (General).....	6
imageMill 2 Monitoring connections (Rear Panel).....	7

Operation

imageMill 2 Operating Procedure.....	8
imageMill 2 Interconnection with other equipment.....	9
imageMill2 with GRACE Windows XP Pro GUI...setup... ..	10
Using GRACE.....	12

Specification

imageMill 2.....	15
------------------	----

Software and License Management

Software Update.....	16
License Renewal.....	16
Software/Firmware License.....	16

Introduction

General Description of imageMill 2

imageMill 2 is a self contained hardware platform running under Windows XP Pro that provides high speed image data processing. imageMill 2 is multi-standard capable – initially designed to handle DPX data files with resolutions upto 4K. (Speeds, Real time or faster to 2K and up to 10fps at 4K). Other data format handling to follow.

imageMill 2's optional applications include. Grace (available now), Steady and Origin (soon to be available)

The basic ImageMill 2 includes RAID 0 disk storage comprising 2 Terabyte input and 2 Terabyte output stores offering complete project image processing within the imageMill 2.

Designed to be operated as a Windows XP Pro (sp3) application. imageMill 2 comes with Windows XP Pro software that provides complete setup and operational functionality. Each imageMill 2 application is controlled from the imageMill 2 software window.

General Description of available imageMill 2 applications

GRACE is a Film Grain and Video Noise management application. GRACE incorporates powerful real time Spatial and Recursive correction with simple to use controls.

Safety Warnings and additional Information

CE Declaration of Conformity

This equipment has been tested and found to comply with standards BS EN55103-1, BS EN55022, BS EN61000-3-2, BS EN61000-3-3, BS EN55103-2, BS EN61000-6-2, BS EN61000-4-2, BS EN61000-4-3, BS EN61000-4-4, BS EN61000-4-5, BS EN61000-4-6, BS EN61000-4-11.

Test Report Number (TBA)

FCC Part 15 Class A Declaration of Conformity

This equipment has been tested and found to comply with the limits for a Class A digital device pursuant to part 15J of the FCC rules. These limits are designed to provide reasonable protection against harmful interference when the equipment is operated in a commercial environment. This equipment generates, uses, and can radiate radio frequency energy and, if not installed and used in accordance with the instruction manual, may cause harmful interference to radio communications.



Warning

Electrical supplies in excess of 50 (fifty) volts are potentially hazardous or lethal; supplies of up to 264V exist within imageMill. IMAGEMILL MUST ONLY BE OPERATED WITH ALL COVERS IN PLACE; covers may only be removed by qualified service personnel for maintenance purposes.

1) Protection against Electrostatic Discharge

Electrostatic discharge (ESD) can degrade or destroy electronic devices during shipping, handling, installation and general operational procedures. Such devices and the items, of which they are component parts, are referred to as ESD-sensitive parts. A majority of ESD failures can be attributed to a charge delivered to an ESD-sensitive part by a human being, very often a small level of charge such as is accumulated in normal circumstances can cause damage. Cintel International Ltd has implemented procedures to protect electronic devices during the manufacture, assembly, test, shipment and installation of its products.

2) Environmental

Relative Humidity: High humidity environments permit static charges to dissipate more effectively, for example- a person walking across a carpeted floor accumulates up to 10 times greater electrostatic voltage at 40% relative humidity than at 70-90% and up to 30 times greater on a vinyl floor. This does not mean that high humidity is safe as the level of charge can still exceed the susceptibility of many devices.

3) Work surfaces

Surfaces covered with common vinyl plastics are the most common source of static electricity and should be avoided. A discharge path, which will ground both the surface and personnel handling ESD-sensitive parts, should be used.

4) Information for Users on Disposal of Old Equipment (Waste from Electrical and Electronic Equipment (WEEE)).

This equipment is designed to comply with EN 50419 and has WEEE certification number 1052ZT



Attention This symbol is only valid in the European Union

(European Union)

This symbol indicates that the electrical and electronic equipment should not be disposed as general household waste at its end-of-life. Instead, the product should be handed over to the appliance collection point for the recycling of electrical and electronic equipment for proper treatment, recovery and recycling in accordance with your national legislation.

By disposing of this product correctly, you will help to conserve natural resources and will help prevent potential negative effects on the environment and human health which could otherwise be caused by inappropriate waste handling of this product. For more information about collection point and recycling of this product, please contact your local municipal office, your household waste disposal service or Cintel International, or your agent of Cintel International.

Penalties may be applicable for incorrect disposal of this waste, in accordance with national legislation.

Restriction of Hazardous Substances (RoHS). Some parts of this product may fall under category 8 or category 9 of annex 1A of Directive 2002/96 EC (WEE) and according to RoHS Directive 2002/95 EC are exempt from the RoHS regulations.

(Business Users)

If you wish to dispose of this product, please contact service@cintel.co.uk to obtain information about returning the product.

(Other Countries outside the European Union)

If you wish to dispose of this product, please do so in accordance with applicable national legislation or other rules in your country for the treatment of old electrical and electronic equipment.

CE	EC DECLARATION OF CONFORMITY	CE
Cintel International Ltd		
Watton Road, Ware, Herts, SG120AE, England, UK		
Declare under sole responsibility that the product		
Product Name:	ImageMill 2	
Product Type / Model:	ImageMill 2 Unit	
Lot:	N/A	
Datch/Serial Number:	IM2010	
Item Number (s)	One	
Year in which CE mark was affixed:	2009	
To which this declaration relates is in conformity with the following standards,		
BS EN55022 Class A 1998	ITE Light Industrial	Emissions
BS EN55103-1 1996	Emission Product Family Standard for Audio Video, Audio Visual Equipment	Emissions
BS EN61000-3-2 2000	Harmonic Current Emissions	Emissions
BS EN1000-3-3 1995	Voltage Fluctuation and Flicker	Emissions
BS EN55024... 1998	ITE	Immunity
BS EN61000-4-2 1995	ESD	Immunity
BS EN61000-4-3 1997	Radiated Immunity	Immunity
BS EN61000-4-4 1995	Fast Transient Burst	Immunity
BS EN61000-4-5 1995	Surges	Immunity
BS EN61000-4-6 1996	Conducted Immunity	Immunity
BS EN61000-4-8	Magnetic Field	Immunity
BS EN61000-4-11 1994	Voltage Dips/Interruptions/ Variations	Immunity
Following the provisions of EU EMC Directive (s) 89/336/EEC and 92/3EEC		
Ware, Herts, England, UK	TBA	
(Place of Issue)	(Name of authorised person)	
TBA	_____	
(Date of Issue)	(Signature of authorised person)	
TEST REPORT NUMBER TBA	ISSUE DATE TBA	PAGE NUMBER: 1

Installation

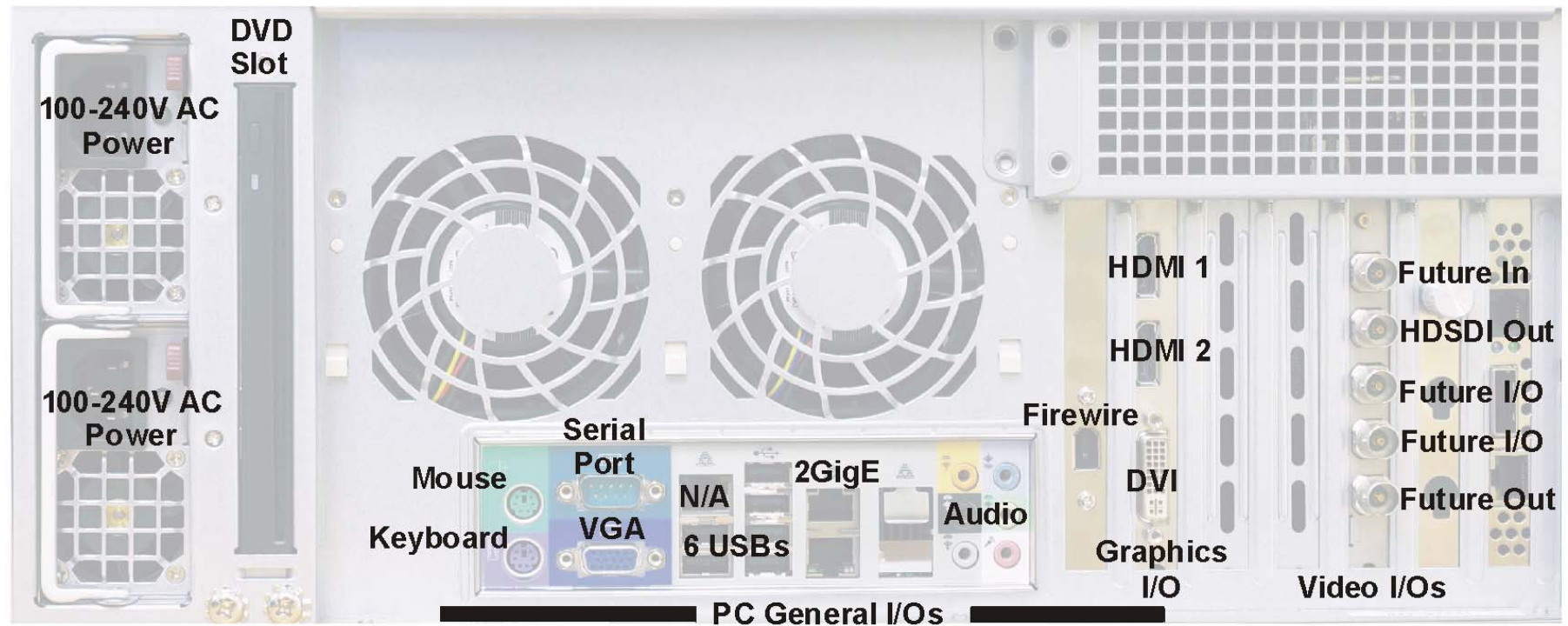
imageMill 2 connections to other equipment

imageMill 2 is a complete system with built in PC, RAID 0 and appropriate firmware and software. The AC power supply must be connected to both AC inlets. (Standard IEC connectors). The system utilises AC power supply redundancy. Should one power supply fail imageMill 2 will continue to operate on the remaining supply and will audibly warn of the power supply failure. The unit is designed to be rack mounted. Do not obstruct the front air intake grill or the four fans at the rear of the unit.

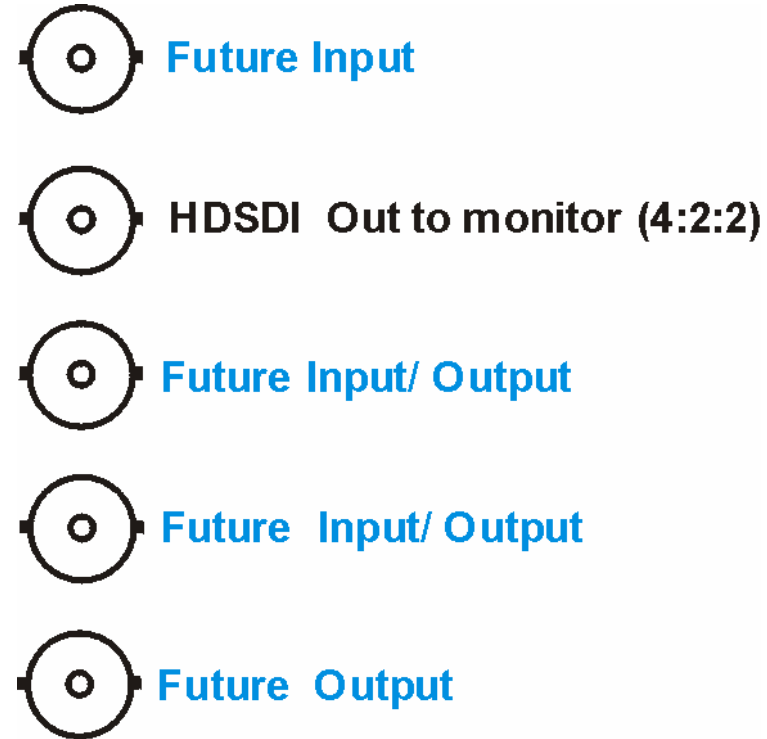
Connect the PC general I/Os to the supplied mouse and keyboard connect a suitable PC monitor to the DVI Graphics I/O, Max resolution 2560 x 1600. (For full specification of graphics I/O refer to Graphics card FX580 specification)

Connect to USB, Firewire, Ethernet or user supplied port* for appropriate use with your Data. The DVD, mounted at the unit's rear, may also be used to load in and record out data files, utilising user supplied DVD recording software.

* imageMill 2 includes a PCI-e 2.0 x8 and a PCI-e 2.0 x16 slot for user interfaces, such as Fibrechannel and 10Gbit Ethernet to be added.



ImageMill 2 rear panel connections



ImageMill 2 rear Panel BNC connections

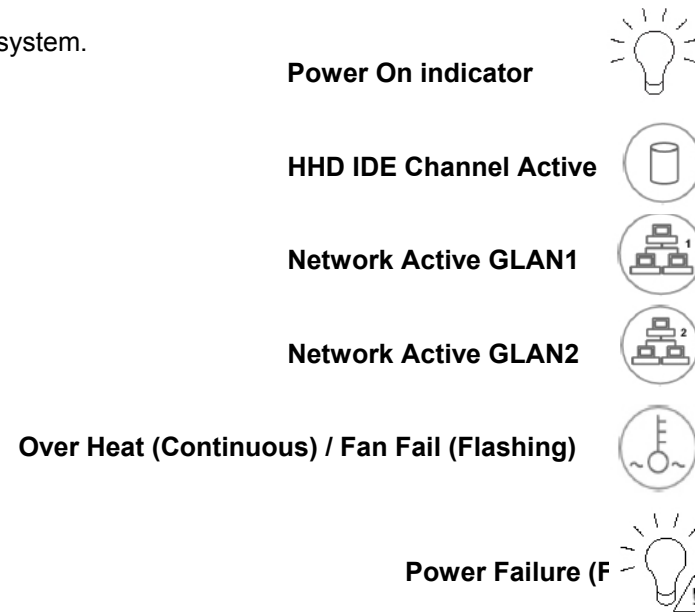
imageMill 2 Operation

Powering up

Note that the Power Supply fans will operate as soon as AC power is applied, however imageMill 2 will only power up when depressing the Red power button at the lower left corner of the front panel.

Below the Power button is the PC reset. Should it become necessary to reset the entire system then depress the reset switch using a thin blunt tool in the hole.

Below the reset hole various indicators display the state of the PC system.



PC Lower Left Panel

General Operation

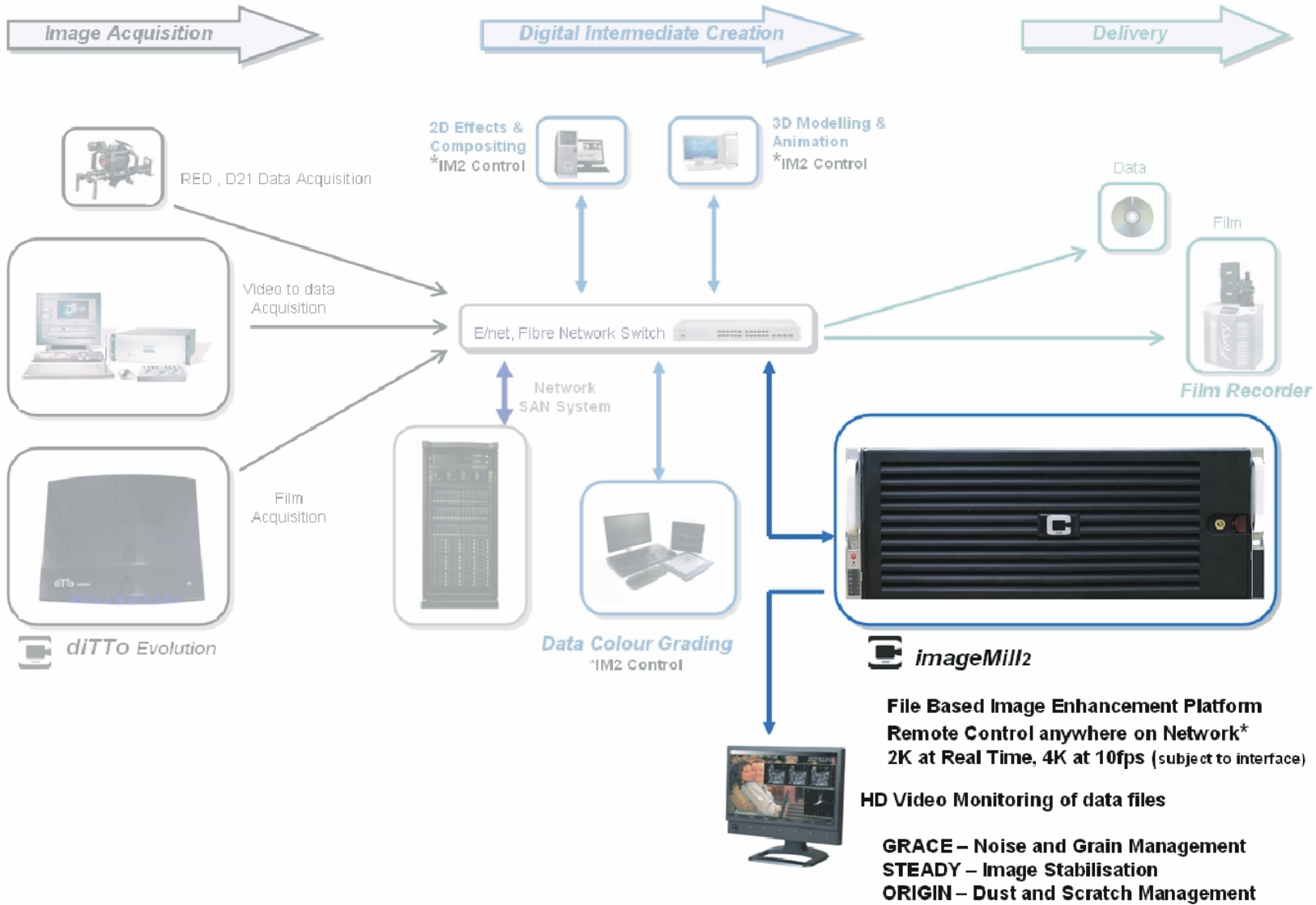
imageMill 2 is based on a PC platform running Windows XP Pro with service pack 3. It is assumed that the user is familiar with such a system. All RAID 0 files and folders are available for manipulation and housekeeping under standard XP Pro functionality.

imagemill 2 includes powerful DSP image processing hardware capable of handling, at high speed, image files upto 4K, presently in DPX format. Files and file folders can be loaded into the input RAID 0 via various supplied data ports or via additional user supplied ports based on built in PCI-e 2.0 slots. The DSP will then process the required images and place them in the output folder created by the user.

ImageMill 2 processes such as GRACE and future options such as STEADY or ORIGIN are accessed via the icon on the PC windows imageMill 2 desktop display.



imageMill2 – Data Work Flow



imageMill 2 with GRACE Operation

To access GRACE on imageMill 2 click on the im2 icon on the desktop



or via Windows “Start - All Programs – im2 “

ImageMill 2 main window

An imageMill 2 window will appear complete with GRACE controls.

The following descriptions for GRACE operation are based on applying GRACE to a set of DPX files.

The window comprises the location and name of the input folder, and a list of the input files contained in the folder.

The location and name of the output folder defines where the processed files will be placed.

The control settings of GRACE are described below.

Note that ImageMill 2 is designed to accommodate other future functions. Each function is selected by a tab, in the example right, the tab is selected for GRACE while a future product, Steady, tab is also shown.

At the lower right of the imageMill 2 window are some frame rate indicators. Once a process is started, these show the speed capabilities of various operations. The lowest operations speed will be the fps throughput of the system.

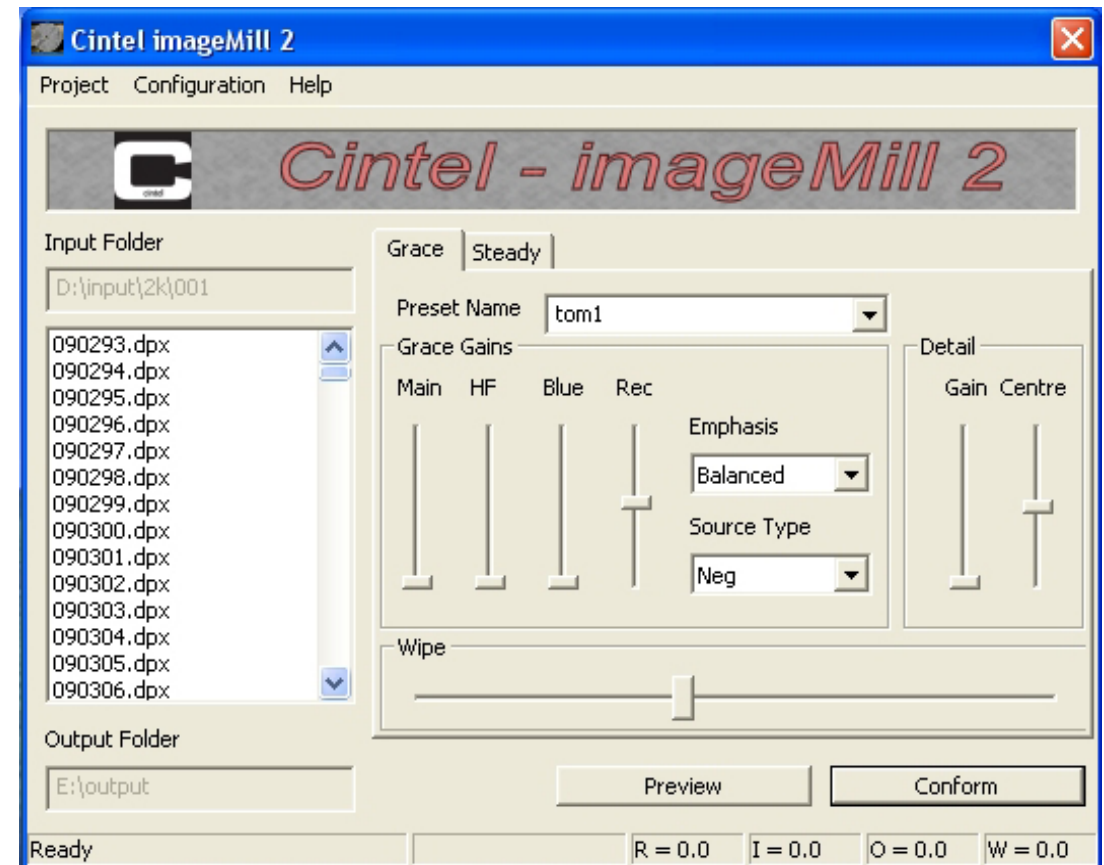
R = Read from RAID

I = Input to imageMill 2 processing engine

O = Output from imageMill 2 processing engine

W = Write to RAID

Selecting the **Project** pull down tab provides a means to Save or Open a project. The project file includes input and output image files folder and all GRACE settings including ALL available Presets so far created.



Selecting the **Configuration** pull down tab provides three functions.

Input Folder. This folder contains the files (DPX) to be processed.

Output Folder. This is the destination folder for the processed (DPX) files. The files appear here, after processing with exactly the same file names as the originals. It is therefore suggested that the folder name reflects the fact that the files have been processed to avoid future confusion.

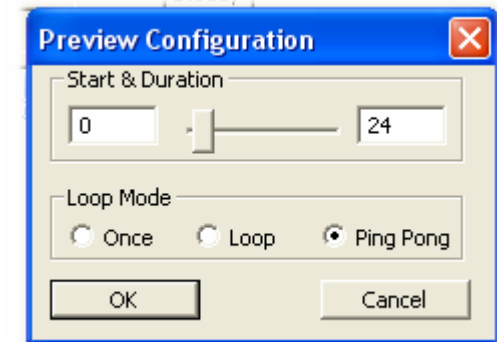


Preview. This tab opens a window to provide adjustments to the way preview operates.

The preview function provides a video output in HD of a sequence of DPX files. This makes viewing the results of adjustment of GRACE controls very clear.

Start & Duration settings provide means to select the sequence start frame and number of frames to be displayed during preview. If the set sequence length exceeds the quantity of frames in the folder, the sequence will read all files to the end of the folder and will then return to the start.

Note: The entries in these fields are numeric only and the sequence start will always be related to the order of files in the folder. Therefore if a folder contains files which start with a sequence number greater than 1 the first file in the sequence will be regarded as that first file. Likewise where files have alpha-numeric starting characters, the files will be listed alphabetically. For example, if a folder contains 3 file sets, (Longshot-000567.dpx to Longshot-000989.dpx), (Closeup-0013.dpx to Closeup-0844.dpx) and (Headshot-06666.dpx-Headshot-07741.dpx); then the files will list alphabetically, such that the first file in the sequence will be Closeup-0013.dpx. To start with say the 10th frame of Headshot-06676.dpx requires the start frame to be the frame count of all the Closeup shots plus the first 10 of the Headshot. i.e. 0844-013+10 =start at 841.



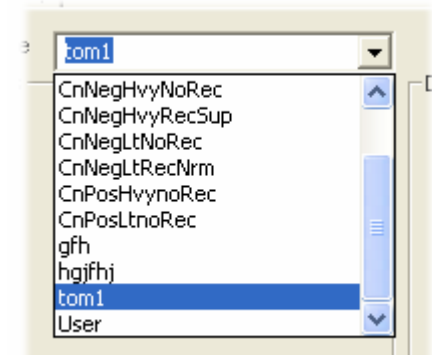
Loop Mode defines how the preview should appear when running.

Once. A single run from start frame for duration length set

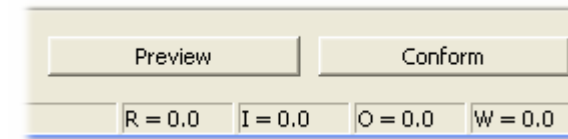
Loop. Starts from start frame, when duration length is finished the preview repeats from the start frame and repeats indefinitely.

Ping Pong. Starts from start frame, runs for duration length then runs in reverse back to start frame and repeats indefinitely.

Presets. GRACE provides a set of predefined values for particular material conditions. The factory default presets may provide an instant set up requiring very little user adjustment.. Each preset can be individually named and each will retain the live setting adjustment levels of GRACE at the time of creation of the preset. Old presets can be modified by loading a preset, adjusting levels etc and then saving the preset by re-typing the same name. Presets can be deleted by highlighting the appropriate preset and hitting the keyboard delete key.



Preview. This mode will generate moving HD video at the monitoring output. The image will comprise an HD 1080i/60 window of the original image, 1920 by 1080 pixels, the preview will run with the frame (DPX file) start and range selected in Preview configuration. GRACE controls can be adjusted to see the results of different settings. However no file conversion is stored to the output RAID. This operation will offer faster frame rates than an actual conversion as no output store processing is required. A progress bar is displayed in this mode.



Conform. This mode will perform a complete GRACE process on all selected frames (DPX files) the frames will also display on the HD monitoring output. A progress bar is displayed in this mode and the process frame rates will be displayed in the lower left corner of the window. All processed images will be stored in the created/selected output folder.

Using GRACE

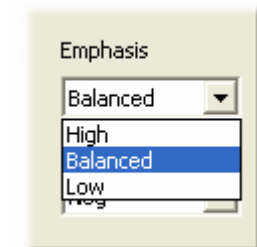
Wipe

The GRACE Wipe control is used to show the before/after effect of Grace, and is only intended as a demonstration aid, for normal operation this control may be left in the full wipe or no wipe position, with Grace active over the whole picture in the far left position. Ensure this control is not partially set when Grace is in use.



Emphasis

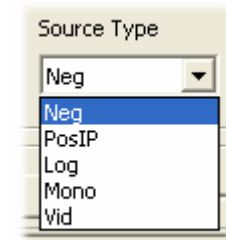
This selection offers modes where GRACE will either work evenly across all areas of the image in a **Balanced** mode, or in a **Highlight** Mode where GRACE will place more emphasis on correcting lighter (i.e. nearer to 'white') areas of the picture or a **Lowlight** mode where grain correction of darker, ('black') areas of the image will be emphasised.



Source Type

SOURCE is used to determine the origination of the images to be processed. It is essential that this selection is made to correctly to reflect the ORIGINATION of the incoming images prior to adjusting any other user controls. The Origination refers to the initial imaging material. For example the material may have originated from film rather than a video camera, in which case the source should be set to the appropriate original film material. If the origination is unknown try the various source settings for the best results. The only exception to this is when the incoming signal is presented in LOG format (this could be SD or HD but most commonly DPX files and HSDL Data) when **Log** should be selected as the source.

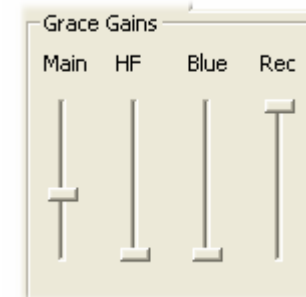
When using Grace keep in mind that as each film type grain structure is different and dependent upon exposure, the adjustments are unique to each image. However it will often be found that a certain set of values are suitable in general for a wide range of film transfers.



Grace Gains

The **Grace Gain** controls provide the adjustments to grain and noise reduction. Apart from the **Blue** control all others act equally on the luminance (RGB) of the image.

The adjustments need to be performed while observing the image on a high quality HD monitor. Prior to any adjustment ensure that the **SOURCE** type is correctly set.



Grace Gains; Main, HF, Blue, Rec control

The **Main** gain control should be the first level of adjustment if it is desired to change the amount of grain reduction. Increasing the level will further reduce the grain visibility but will begin to reduce the sharpness of some images. This control may be used to change the look of the picture over a range between a grainy “film look” to a flat “video look”, however take care not to overdo the correction.

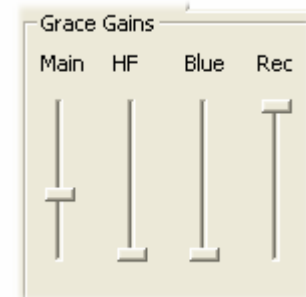
Typical levels cannot be generalized as they depend on the film stocks and grain levels. If very grainy material is being processed then additional range is available, at such levels some **Detail** correction may be required. If more defined correction is required, try the **Emphasis High** and **Low** modes rather than the **Balanced** mode.

The **HF** gain control operates similarly to the **Main** gain but works on finer grain. This control in combination with the **Main** gain may give a better result for SDTV sourced material, or for video noise reduction. If in doubt select zero for the **HF** gain, as excessive use may soften the image.

It is somewhat difficult to describe the result of this control, it is best described as “smoothing the grain structure”. It also helps minimise any noise in the image. The levels of the **Main** and **HF** controls give good results when they are about equally driven.

The **Blue** gain control is intended to give extra correction in the blue channel for films showing excessive blue grain. Select zero if not needed since over-correction may result in yellow edges on some images. To best observe the effect of this control, switch the image monitor to Blue channel only. This makes assessment of the **Blue** gain adjustment more obvious.

The **Blue** gain control should only be used with caution, in some instances it can result in a slight yellowing around image edges. Typical usage would be for under-exposed, dark scene areas where the individual BLUE grains become prominent. Often when this control is required it will need to be set to a reasonably high level.



The **Rec** (recursive) gain control will reduce the level of Film Grain and Video Noise across the entire frame. As this control is recursive, it will not work on a still image; it requires moving images to process.

The **Rec** (Recursive) control should be used in conjunction with MAIN and HF to achieve the optimum setting for noise and grain. The results of this control can only be observed while GRACE is in Preview mode and the images are moving.

GRACE Detail and Centre control.

The **Detail** correction of GRACE is similar to other aperture correction systems but perhaps simpler, it has just 2 controls.

The **Detail Gain** control is an additional feature provided with GRACE on imageMill 2, it operates in a similar fashion to an aperture corrector to make the images sharper. Generally leave this control at its default zero setting. If it is required to make the picture a little sharper then this control may be used to correct for any slight loss of edge sharpness introduced by GRACE gain controls.

The **Centre** control adjusts the spatial frequency of the Detail and is used in conjunction with the Detail control. The detail control will cause the film grain and noise to become slightly more visible, and the **Centre** control may be adjusted to minimise this effect. Generally keep the **Centre** set to as low a value as possible to avoid artefacts on the image.

To set the **Centre**, overdrive the **Detail Gain** level. **Centre** is introduced very slowly, just until the high frequency (Grain) is no longer enhanced. Care should be taken not to introduce too much **Centre** or the pictures will end up looking very “edgy”. With the **Centre** level set, the **Detail Gain** can now be backed off to the desired level. It is recommended not to use any **Detail**, even in HD, unless the amount of grain reduction warrants adding back some sharpness. Note that the removal of grain from an image can be perceived as making the image soft.



ImageMill 2 Specification

System

PC based Platform running Windows XP Pro with Service Pack 3
 RAID 0 Storage . (Optional). 2 Terabyte for input storage (6 x 500Gb striped disks). 2 Terabyte for Output storage. (6 x 500Gb striped disks)
 Internal 500Gbyte HDD for general PC based operations
 DVD Recorder
 Internal 16bit RGB Digital Signal Processing (DSP)

External Interfaces

Firewire 800 port
 2 Ethernet (2 x RJ45) 1 Gbit
 6 USB2
 1 x Serial port
 1 x DVI video output
 2 x HDMI video output
 Standard PC audio I/O
 1 x VGA
 PS2 Keyboard & mouse.

Internal Interfaces (Suitable for user supplied interface cards, such as fibre channel and 10Gbit Ethernet)

PCI-e 2.0 x8
 PCI-e 2.0 x16

Image monitoring output

1 x BNC HDSI monitoring output of ImageMill 2 processes (1080i/60)

Standards Supported:

DPX Files All data resolutions upto 4K

User Interface

3rd Party controller systems – To be advised

Power:

Type	Dual 900W. (Dual supplies for supply failure redundancy)
Input	2 x IEC connectors
Input Voltage Range	100-240 47/63Hz Auto sensing
Consumption	Standby mode 55w. Operational 700w
Mains Fuse Rating	2 x 13A (T) 250V

Mechanical:

Temperature Range	15-35°C Operational.
Cooling	Built in Fan assisted cooling. Do not restrict airflow to front, or from rear of unit.
Case format	19" 4RU Rack mounting (with removable front panel to gain access to RAID disks).
Case Dimensions	96cm x 63cm x 37cm
Weight	38Kg
Approvals	CE / EN60950.

Software Upgrade

To be advised

Licence Renewal

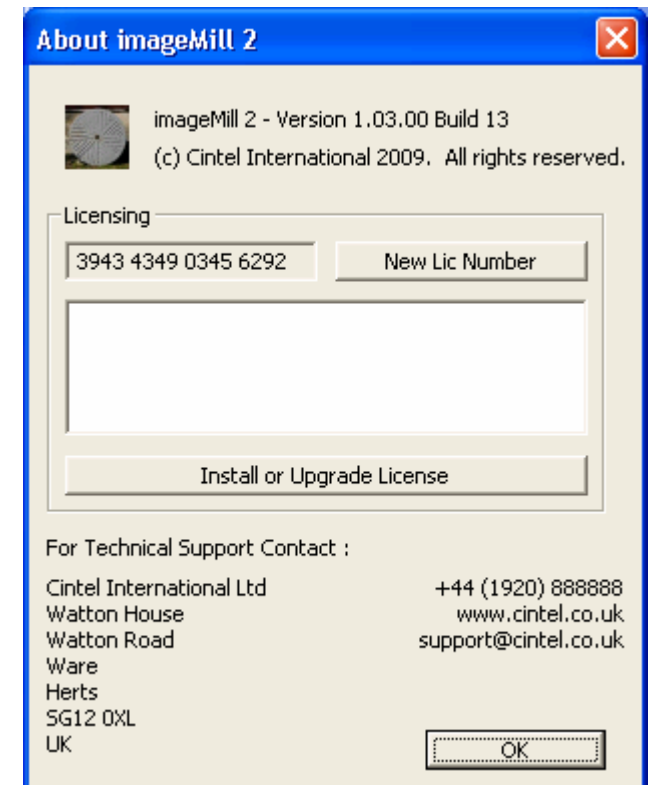
If increasing the licence period or adding further options, a new licence will need to be installed. Contact your local Cintel International agent or distributor.

To apply a new license number for the the imageMill 2 select the **Help** tab, select **About imageMill 2** and then select **New Lic Number** and enter the license number supplied by Cintel.

“CINTEL INTERNATIONAL LIMITED SOFTWARE/FIRMWARE LICENCE”

PLEASE READ THIS DOCUMENT CAREFULLY BEFORE SIGNING AND RETURNING TO CINTEL. BY SIGNING THIS DOCUMENT, YOU AGREE TO BE BOUND BY THE TERMS OF THIS SOFTWARE/FIRMWARE LICENCE.

This Software, Firmware and associated printed material is licensed to you (“the Licensee”) by Cintel International Limited of Watton Road, Ware, Hertfordshire SG12 OAE (“Cintel”) for use with the Cintel Equipment for which the Software and Firmware is designed (“the Equipment”). Copyright and all other rights in the information contained within the disk(s) and supplied by Cintel shall at all times remain in the ownership of the supplier.



1.CINTEL'S LICENCE

This Software/Firmware Licence is granted by Cintel or by Cintel acting as an agent for the owner of the software and is subject to the following:

Cintel hereby agree;

- (a) to license the Licensee to use one copy of the Software/Firmware for use with the Equipment.
- (b) providing the Licensee returns a signed copy of this document;
 - (i) to supply free updates if applicable to the Software/Firmware for a period of six months commencing from the date of receipt by the Licensee of the Software/Firmware.
 - (ii) to replace the Software/Firmware at the Licensee's expense should it become lost or damaged.
 - (iii) to provide timed licenses where deemed appropriate.

2.PERMITTED USE

- (a) The Licensee shall promptly on receipt, where the Software/Firmware is not preloaded in the Equipment, load the Software/Firmware in its entirety including any copyright notices and statement of ownership onto the Equipment.
- (b) The Licensee shall store the master Software/Firmware disk(s) in secure storage in the envelope or within the equipment as appropriate.
- (c) The Software/Firmware may be used only on and in relation to the Equipment in the ordinary course of the Licensee's business.

3.RESTRICTIONS ON THE LICENSEE

- (a) The Licensee save as required for its own internal use or as permitted by law shall not itself nor permit or facilitate its employees, agents or any third party to copy, publicly display, transmit or make any adaptation or modification of the Software/Firmware.
- (b) The Licensee shall not remove or permit to be removed any copyright notice on the Software/Firmware nor any statement of ownership which may be affixed thereto.
- (c) The licence is personal to the Licensee who shall not transfer it or grant any sub licences without Cintel's written consent which shall not be unreasonably withheld where the proposed transfer is in respect of the sale of Equipment to a bona fide user and the purchaser has consented to accept these licence terms and provided the Licensee retains no copies of the Software/Firmware including any printed materials. A transfer fee may be required.
- (d) The Licensee shall not be permitted to transfer the licence to any USA or other government agency unless such transfer is in accordance with the procedures (which are available on request) contained in any third party licence the Licensor holds in respect of third party Software/Firmware contained in the Equipment.

4.ACCESS

The Licensee shall permit Cintel's representatives to have access at all reasonable times to the Software/Firmware and any records relating to its use.

5.WARRANTIES

Cintel warrants that when loaded with the Software/Firmware the Equipment will substantially operate in accordance with Cintel's written specification.

6.LIMITATION OF LIABILITY

- (a) AS THERE IS NO SPECIFIED VALUE FOR THIS LICENCE, AND THIS LICENCE IS UNRELATED TO A PARTICULAR USE TO WHICH THE LICENSEE INTENDS TO APPLY THE SOFTWARE/FIRMWARE, CINTEL MAKES NO WARRANTIES IN RELATION TO THE PERFORMANCE OF THE SOFTWARE/FIRMWARE OR ITS FITNESS FOR ANY PARTICULAR PURPOSE.
- (b) Cintel or its employees shall not be liable for any consequential incidental or indirect damages arising out of the use or inability to use the Software/Firmware or accompanying written materials.
- (c) Cintel's liability for actual damages for any cause whatsoever will be limited to the value of the media on which the Software/Firmware is supplied.
- (d) Warranty claims made pursuant to Clause 5 shall be invalid unless received in writing by Cintel prior to six months from the date of the invoice for the Equipment.

7.APPLICABLE LAW

This Licence shall be interpreted in accordance with the laws of England and the Licensee hereby submits to the exclusive jurisdiction of the English Courts.

Product Serial Number _____

Software Version _____

Licensee Name _____

Licensee Position Title _____

Licensee Signature* _____

Date _____

For Cintel International _____

*Only the initial 28-day license will be issued until this document is received by Cintel International with an official Licensee signature